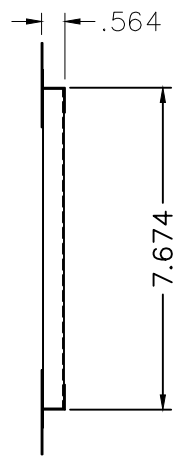
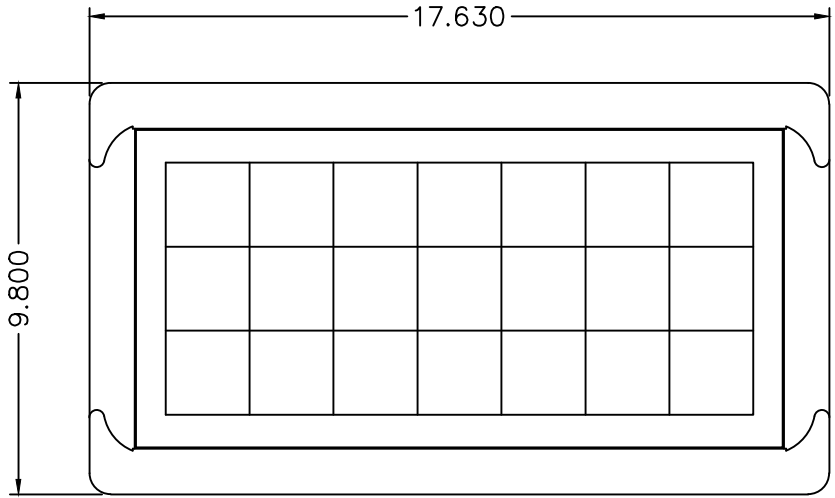
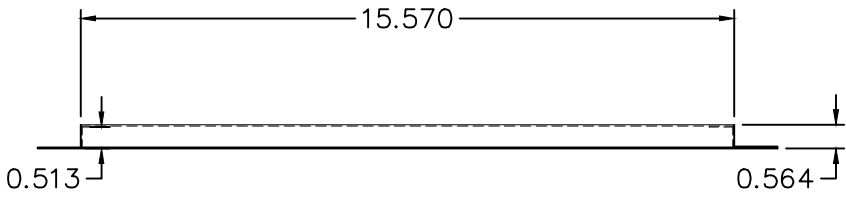



REVISIONS				
ZONE	REV	DESCRIPTION	DATE	APPROVED



Material: 0.024" Stainless Steel
 Finish : Powder Coat White

TOLERANCES UNLESS OTHERWISE SPECIFIED X.X +/-0.06 X.XX +/-0.03 X.XXX +/-0.005	 Foundation Flood Vents 877-441-8368 SMARTVENT.COM		SMART VENT PRODUCTS, INC 430 Andbro Dr. Unit 1 Pitman NJ 08071		
			Flood Vent Sealing Kit		
THE INFORMATION CONTAINED IN THIS DRAWING IS THE SOLE PROPERTY OF SMART VENT INC. ANY REPRODUCTION OR USE OF THIS INFORMATION WITHOUT THE WRITTEN PERMISSION OF SMARTVENT INC. IS PROHIBITED.	SIZE	FSCM NO.	DWG NO.	REV	
	DR. BB	DATE: 11/30/18	1540-526	SHEET	



INSTALLATION INSTRUCTIONS
& DETAILS
MODEL 1540-526
FLOOD VENT SEALING KIT

877-441-8368
SMARTVENT.COM

INSTALLATION INSTRUCTIONS

1. PREPARE A CLEAN 16.25" WIDE BY 8.25" HIGH ROUGH OPENING (APPROX. 1 BLOCK WIDE X 1 BLOCK HIGH) FOR EACH FRAME. ENSURE THE BOTTOM OF THE ROUGH OPENING IS NO MORE THAN 12" ABOVE THE FINISHED GRADE.
2. APPLY A BEAD OF HURRIBOND GRIP & SEAL OR EQUIVALENT ADHESIVE AROUND THE BACK OF THE FLANGE ON THE FRAME.
3. INSERT THE SEALING KIT FRAME INTO THE INTERIOR OPENING, 1540-520 WILL BE INSTALLED INTO THE EXTERIOR OPENING. 1540-520 MUST BE INSTALLED FOR EXTERIOR WALL APPLICATIONS.
4. WITH THE FRAME NOW IN THE OPENING, CHECK THAT THE FRAME IS SQUARE AND FIRMLY ADHERED.

DETAIL SPECIFICATIONS:

MATERIAL: STAINLESS STEEL - Powder Coat White Finish
: Homasote® - Medium Density Fiber Board (Cellulose Based)

OPERATION: AUTOMATIC NON-POWERED ACTIVATION AND OPERATION

INSTALLATION:

SECURED W/ AN ADHESIVE (HURRIBOND)

HYDROSTATIC RELIEF: Coupled with 1540-520 Insulated Smart Vent to Provide 200 SQ. FT PER VENT

NOTE: Wall must be minimum 7" thick to couple 1540-526 Flood Vent Sealing Kit with 1540-520 Flood Vent

COLORS: WHITE (STANDARD)

MEETS THE REQUIREMENTS FOR ENGINEERED OPENINGS AS SET FORTH BY:
FEMA, NFIP, ICC, & ASCE
SUPPORTIVE DOCUMENTS, TB 1-08, 44CFR 60.3(C)(5), ASCE 24-14
ICC EVALUATION # ESR-2074